

MINI REVIEW

The Plant Ecology of Nature-Based Solutions

Unintended consequences of planting native and non-native trees in treeless ecosystems to mitigate climate change

Jaime Moyano¹  | Romina D. Dimarco^{2,3}  | Juan Paritsis⁴  | Tess Peterson²  |
 Duane A. Peltzer⁵  | Kerri M. Crawford²  | Matthew A. McCary⁶  |
 Kimberley T. Davis⁷  | Aníbal Pauchard^{8,9}  | Martín A. Nuñez^{1,2} 

¹Grupo de Ecología de Invasiones, INIBIOMA, CONICET, Universidad Nacional del Comahue, San Carlos de Bariloche, Argentina; ²Department of Biology and Biochemistry, University of Houston, Houston, Texas, USA; ³Grupo de Ecología de Poblaciones de Insectos, Instituto de Investigaciones Forestales y Agropecuarias Bariloche (INTA-CONICET), San Carlos de Bariloche, Río Negro, Argentina; ⁴INIBIOMA, CONICET, Universidad Nacional del Comahue, San Carlos de Bariloche, Argentina; ⁵DP. Manaaki Whenua Landcare Research, Lincoln, New Zealand; ⁶Department of BioSciences, Rice University, Houston, Texas, USA; ⁷Missoula Fire Sciences Laboratory, Rocky Mountain Research Station, USDA Forest Service, Missoula, Montana, USA; ⁸Laboratorio de Invasiones Biológicas (LIB), Facultad de Ciencias Forestales, Universidad de Concepción, Concepción, Chile and ⁹Institute of Ecology and Biodiversity (IEB), Santiago, Chile

Correspondence

Jaime Moyano

Email: mjaime@comahue-conicet.gob.ar

Martín A. Nuñez

Email: nunezm@gmail.com**Handling Editor:** Richard Bardgett**Abstract**

1. Naturally treeless ecosystems are being replaced by native and non-native trees worldwide, often through deliberate afforestation using forestry tree species. By introducing species having novel traits, such as relatively rapid growth, many afforestation efforts also produce numerous changes in ecosystems, at the landscape scale.
2. Trees are considered critical for climate change mitigation; indeed, many current carbon sequestration strategies rely on trees. Planting trees or allowing trees to naturally colonize through range expansions can be seen as an ideal way to increase atmospheric carbon capture. For example, a snapshot approach may show that introducing trees into treeless ecosystems enhances aboveground accumulation of carbon, helping increase ecosystem carbon storage.
3. However, considering other impacts such as reductions in soil carbon or albedo and increased fire severity (through increases in fuel loads and connectivity) reduces the effectiveness of afforestation strategies for climate change amelioration. Additional negative impacts of afforestation are also likely, such as the reduction of native biodiversity and productivity, substantial water yield losses, and changes in nutrient cycles, which can exacerbate other global change drivers. Further, tree invasions originating from afforestation can exacerbate these negative impacts.
4. *Synthesis.* This review highlights that the positive and negative impacts of planting trees in naturally treeless ecosystems as a strategy to mitigate climate change are idiosyncratic, depending on the location where trees are introduced, the time period trees are allowed to grow, and risks of spread and impacts associated with specific tree species. Although planting trees can potentially be a tool to fight climate change, a greater consideration of their impacts is required to minimize the unexpected negative consequences of afforestation efforts.

KEYWORDS

afforestation, carbon certification, carbon sequestration, global change ecology, invasive woody plants, natural climate solution, plant-climate interactions

1 | INTRODUCTION

Climate change, driven largely by the increase in the concentration of greenhouse gases in the atmosphere, is one of the most important challenges facing humanity (IPCC, 2022) stimulating many alternative solutions to mitigate its progression (Griscom et al., 2017; Seddon et al., 2020; Smith et al., 2016). Unfortunately, current estimations indicate that atmospheric carbon enrichment will not lead to increased carbon sequestration at the ecosystem level (Jiang et al., 2020). Although reducing energy use and limiting the emission of greenhouse gases are widely thought to be the most effective solutions (Anderson et al., 2019; Baldocchi & Penuelas, 2019; Bond et al., 2019; Smith et al., 2016), this is not yet feasible in many countries or sectors of society. On the other hand, replacing naturally treeless ecosystems (i.e. ecosystems that in their natural form lack trees, such as grasslands, shrublands and wetlands) with tree plantations using species having high growth rates (hereafter afforestation) is increasingly promoted globally as a natural climate solution (i.e. nature based-solutions that apply specifically to climate change mitigation) (Bastin et al., 2019; Xu et al., 2023; <https://www.bonnchallenge.org/>) and carried out across the world through large scale schemes (Figure 1; Bond et al., 2019; Feng et al., 2016; Lewis et al., 2019). The goal of this natural climate solution is to fix more carbon in plant biomass and, therefore, remove carbon dioxide, the primary greenhouse gas emitted through human activities, from the atmosphere. Potential benefits of afforestation projects are increased carbon storage (i.e. carbon stock per unit of area), reduced soil erosion, growth of local economies, and provision of fibre and shelter for local communities (Holl & Brancalion, 2020). One of the main incentives for the adoption of this natural climate solution is the economic market of carbon credits which, through the adoption of certified standards (<https://verra.org/programs/verified-carbon-standard/>), can also make afforestation projects economically profitable.

However, the long-term effectiveness of afforestation as a solution has been called into question both for overall ecosystem carbon storage and associated positive (co-benefits) or negative ('co-harm') effects in naturally treeless ecosystems (Table 1).

Treeless ecosystems have been historically underappreciated both in the context of biodiversity conservation and climate change mitigation, a tendency influenced by culturally driven beliefs that trees are inherently good for the environment (Cohen, 2004; Han, 2007; Kaine et al., 2023). For many, trees represent stability, longevity, and community (Djoudi et al., 2022), often playing a role in community building rituals—the planting of trees can even symbolize renewal and forward progress for both people and the environment (Elmendorf, 2008; Tidball, 2014). The practice of afforestation on large scales has historical ties to timber economics, with standardized measures of minimum percent cover (to maintain productive forests) dating back to the early 1800s (Davis & Robbins, 2018). Restoration initiatives today still reflect these standards despite decades of advances in ecology and land management that contest them (Bond et al., 2019; Davis & Robbins, 2018).

Even if some treeless ecosystems (e.g. grasslands, shrublands) were less diverse and captured less carbon than other ecosystems (e.g. forests), they are still highly valuable ecosystems whose unique biodiversity and ecosystem services could be jeopardized if replaced with trees (Veldman et al., 2015). Among these ecosystems, grasslands alone cover more than 40% of earth's land surface, store 34% of the terrestrial carbon stock (White et al., 2000), provide habitats for numerous plant and animal species, and deliver a wide range of ecosystem services (Bardgett et al., 2021). However, 49% of the area covered by grasslands has been degraded (Bardgett et al., 2021), with an average 8.5% reduction in soil carbon (Eze et al., 2018), a problem that could be exacerbated by their replacement with tree plantations. On the other hand, through management and biodiversity restoration, grasslands can also provide low cost and high carbon gain

FIGURE 1 Upper left panel: Afforestation site where *Pinus contorta* was planted in a Patagonian semiarid steppe, near Junín de los Andes (Argentina). Photo: Mauro Sarasola. Upper right panel: Afforestation with *Pinus* spp. in a grassland of the Drakensberg (South Africa). Photo: Brian W. van Wilgen. Bottom left panel: Aerial image of afforestation site at Nebraska National Forest at Halsey (United States). Source: Google Earth. Trees were planted as part of an experimental forest in the 1930s through 50s (the original vegetation on these sites was semi arid C4 dominated grasslands). This is the largest afforestation in USA. Bottom right panel: Afforestation replacing grassland near Christchurch (New Zealand). Photo: Martin A. Nuñez.

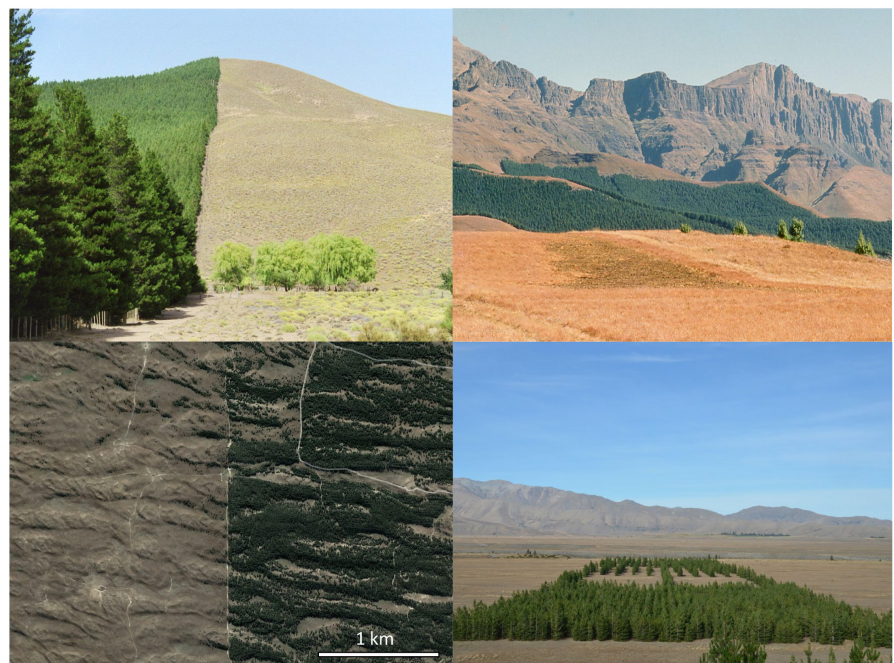


TABLE 1 Afforestation impact [increase (+), decrease (-), no change (=)] on aboveground plant carbon, soil carbon, albedo, fire severity, biodiversity, local water yield and tree invasions.

Variable	Afforestation impact	Reference
Aboveground carbon	+	Bastin et al., 2019; Lewis et al., 2019; Rohatyn et al., 2022; Roe et al., 2019; Xu et al., 2023
Soil carbon	-/=/+	Bárcena et al., 2014; Berthrong et al., 2009; Berthrong et al., 2012; Deng et al., 2016; Duarte-Guardia et al., 2020; Dube et al., 2009; Eclesia et al., 2012; Guo & Gifford, 2002; Hong et al., 2020; Laganière et al., 2010; Veldman et al., 2019
Albedo	-	Arora & Montenegro, 2011; Bright et al., 2015; Mykleby et al., 2017; Rohatyn et al., 2022; Rotenberg & Yakir, 2010; Li et al., 2015
Fire severity	+	Archibald et al., 2013; Lindenmayer et al., 2023; McWethy et al., 2018, Paritsis et al., 2018; Stevens & Bond, 2024; Veldman et al., 2019
Biodiversity	-	Allan et al., 1997; Armstrong et al., 1998; Andrés & Ojeda, 2002; Bremer & Farley, 2010; Lipsey & Hockey, 2010; Nerlekar & Veldman, 2020; Prangel et al., 2023; Veldman et al., 2015
Water yield	-	Alvarez-Garretton et al., 2019; Farley et al., 2005; Feng et al., 2016; Jackson et al., 2005; Jobbágy et al., 2013; Veldman et al., 2019; Wang et al., 2020
Invasion	+	Nuñez et al., 2017; Simberloff et al., 2010; Richardson et al., 1994; Shackleton et al., 2014

natural climate solutions (Bai & Cotrufo, 2022; Dass et al., 2018; Yang et al., 2019), with a potential net carbon sequestration of 0.35 Gt C/year at a global level (Griscom et al., 2017), which is comparable to the potential for carbon sequestration of afforestation in all suitable dryland regions (0.40 Gt C/year; Rohatyn et al., 2022).

Knowledge of plant ecology is key for the design of most natural climate solutions. In this regard, previous studies have focused on different aspects through which afforestation affects plant ecology to mitigate climate change. These include: the potential to increase carbon sequestration in plant biomass (Bastin et al., 2019; Lewis et al., 2019; Rohatyn et al., 2022; Veldman et al., 2019); the effect of introducing a new plant life form on other carbon pools, such as soil carbon (Berthrong et al., 2009; Deng et al., 2016; Hong et al., 2020); the net effect on climate warming mitigation (Arora & Montenegro, 2011; Rohatyn et al., 2022); the impact on plant and animal biodiversity (Andrés & Ojeda, 2002; Lipsey & Hockey, 2010; Nerlekar & Veldman, 2020; Prangel et al., 2023); the changes to fire severity (Lindenmayer et al., 2023; McWethy et al., 2018, Paritsis et al., 2018; Stevens & Bond, 2024); the alteration of water cycling (Farley et al., 2005; Feng et al., 2016; Jackson et al., 2005; Ricciardi et al., 2022); and the possibility of using tree invasions, originating from tree plantations, to mitigate climate change (Nuñez et al., 2021). Here, we integrate all these aspects to address the unintended negative impacts of afforestation at a global level, outline possible solutions to avoid these unintended consequences, and identify research opportunities for better understanding the long-term consequences of this natural climate solution.

2 | UNINTENDED CONSEQUENCES OF AFFORESTATION

2.1 | Limited mitigation potential

For the year 2021, the total anthropogenic emissions reached 10.20 Gt C/year, of which 3.00 Gt C/year were sequestered by the oceans and 2.90 Gt C/year were sequestered in land ecosystems

(Friedlingstein et al., 2022). The remaining 4.30 Gt C/year will continue to be released into the atmosphere, increasing the concentration of greenhouse gases. Estimations from the potential area of treeless ecosystems that can be afforested, spanning from 350 to 448 million ha indicate, on average, a potential net increase in carbon sequestration of 0.83 Gt C/year (Table 2; Bastin et al., 2019; Lewis et al., 2019; Rohatyn et al., 2022; Veldman et al., 2019). According to these estimations, to mitigate anthropogenic emissions only through afforestation would require converting more than one-third of global grasslands into tree plantations. This carbon sequestration capacity can be even more limited if we consider how tree growth (Cabon et al., 2022) and survival (Brodrribb et al., 2020) is restricted by droughts, which are expected to become more frequent and severe (Cook et al., 2020). On the other hand, the reforestation of areas previously covered by forests has the potential to produce a net increase in carbon sequestration of 1.82 Gt C/year, more than twice as much as the afforestation potential (Table 2; Bastin et al., 2019; Griscom et al., 2017; Kempainen et al., 2020; Veldman et al., 2019). While afforestation is being widely promoted to mitigate climate change, the restoration of forests throughout the world is much more effective at increasing carbon sequestration.

Conversion of naturally treeless ecosystems to tree plantations may not increase total carbon sequestration in many cases (Lewis et al., 2019; Veldman et al., 2019) because the main carbon pool in these ecosystems, soil carbon (Farley et al., 2004; Jones & Donnelly, 2004; Tang et al., 2018), may be substantially reduced through afforestation (Duarte-Guardia et al., 2020; Guo & Gifford, 2002; Li et al., 2023). The loss of soil carbon caused by afforestation can completely offset the increment in carbon sequestration in tree biomass (Friggens et al., 2020; Veldman et al., 2019). The current methodology (United Nations, 2013) followed by certification standards assumes that afforestation increases soil carbon in the long term (i.e. tens of years) for most sites, so the measurement of changes in soil carbon are optional. Just recently (by the end of 2023), one of this certification standards was updated to require the measurement of changes in soil carbon only if soils are heavily disturbed during the plantation of trees (<https://verra.org/programs/>

TABLE 2 Estimations of carbon sequestration potential (Gt C/year) for afforestation (planting trees in previously treeless ecosystems) or reforestation (planting trees in areas previously covered by forests) for an area of 400Mha, based on different literature sources.

Natural climate solution	Carbon sequestration potential (Gt C/year) for 400Mha	Reference
Afforestation	2.96	Bastin et al. (2019)
	0.01	Lewis et al. (2019)
	0.00	Veldman et al. (2019)
	0.36	Rohatyn et al. (2022)
Reforestation	2.90	Bastin et al. (2019)
	1.63	Griscom et al. (2017)
	1.12	Veldman et al. (2019)
	1.63	Kemppinen et al. (2020)

Note: More detail on these estimations can be found in [Table S1](#).

[verified-carbon-standard/](#)). However, many variables influence the impact of afforestation on soil carbon.

Although it is not yet clear how to predict where afforestation will increase soil carbon and where it will reduce it, there is accumulating evidence on some key variables influencing this process. Annual precipitation is one of the main factors that modulates the impact of afforestation on soil carbon. Sites with higher precipitation (humid sites) show soil carbon loss (Berthrong et al., 2012; Eclesia et al., 2012; Guo & Gifford, 2002) while sites with lower precipitation (drier sites) gain soil carbon (Berthrong et al., 2012; Eclesia et al., 2012) or have no net change (Guo & Gifford, 2002). Time since afforestation is another key variable, with soil carbon increasing as trees in the plantation grow (Bárcena et al., 2014; Berthrong et al., 2012; Duarte-Guardia et al., 2020; Eclesia et al., 2012), highlighting the need for long growth periods before clearcutting (harvest) or a switch to 'carbon farming' where the intention is not to harvest. Tree species identity also makes a substantial difference on the change in soil carbon, with conifers either reducing soil carbon (Berthrong et al., 2009; Guo & Gifford, 2002) or having no effect (Bárcena et al., 2014) and broadleaf species either increasing soil carbon (Laganière et al., 2010) or having no effect (Guo & Gifford, 2002). The soil carbon level before afforestation is also important, with a negative relationship between initial soil carbon and soil carbon after afforestation (i.e. sites with higher initial soil carbon tend to lose carbon because of afforestation) (Deng et al., 2016; Hong et al., 2020). Further, the soil depth considered can influence the overall impact of afforestation on soil carbon, with greater impacts of afforestation in superficial layers (Bárcena et al., 2014; Dube et al., 2009). Therefore, it is key to consider the ecological context when designing afforestation projects (Holl & Brancalion, 2020), since the interaction between these variables can cause unexpected effects in soil carbon with potential carbon losses. Future research could address the interaction between the main variables that affect the impact of afforestation on soil carbon.

2.2 | Potential net warming effect

Even if afforestation projects do increase total carbon sequestration, they can still contribute to global warming through other

mechanisms. Trees absorb more solar energy than snow, bare soil or other life forms (such as grasses) because they reflect less solar radiation (reduced albedo). As a result, the areas where trees have replaced (previously) treeless ecosystems absorb more heat, producing warming effects that may offset their cooling effect via increased carbon sequestration (Arora & Montenegro, 2011; Bright et al., 2015). In some cases, this land use change can increase soil temperatures (Kropp et al., 2020). This trade-off between albedo and carbon sequestration due to afforestation produces a net warming effect (because the reduction in albedo offsets the increase in carbon sequestration) at high latitudes and high elevations (Li et al., 2015; Mykleby et al., 2017; Rohatyn et al., 2022) and in semi-arid regions for decades before it turns into a cooling effect (when the increase in carbon sequestration compensates the reduction in albedo) (Rotenberg & Yakir, 2010). Furthermore, the eventual cooling effect that afforestation could create is slight (Rohatyn et al., 2022), reducing the global temperature only 0.45°C by 2100 if afforestation was carried out across the total area actually covered by crops (2020 million ha), which is a highly unlikely scenario (Arora & Montenegro, 2011). Considering the limited effect of tree planting to cool down the atmosphere, it would require replacing all treeless ecosystems throughout the world to mitigate climate change (Arora & Montenegro, 2011; Baldocchi & Penuelas, 2019; Bastin et al., 2019; Bond et al., 2019), with negative consequences that far exceed their potential benefits (Holl & Brancalion, 2020; Jackson et al., 2005; Veldman et al., 2015). Smart forestry aims to avoid afforestation in locations where this results in net warming, reducing the afforested area and increasing its climate change mitigation effectiveness (Rohatyn et al., 2022).

2.3 | Fundamental alteration of fire regimes, water balance and nutrient cycling

Fire intensity increases with afforestation in deserts and xeric shrublands, and in temperate and tropical grasslands (Veldman et al., 2019) and some common plantation species, such as *Eucalyptus globulus*, have traits that make them especially flammable (Guerrero et al., 2022). Studies from multiple countries have documented large, high severity wildfires in fast growing and densely stocked tree plantations

(Lindenmayer et al., 2023). In the context of climate change, fire risk is expected to increase in many areas of the world (Bowman et al., 2020; Jolly et al., 2015; Kitzberger et al., 2022), making fire suppression highly unachievable (Bowman et al., 2020). Tree plantations may not only exacerbate this tendency (McWethy et al., 2018; Paritsis et al., 2018) but, if burned would also release large portions of the carbon previously sequestered (Stevens & Bond, 2024; Veldman et al., 2019), seriously calling into question the effectiveness of afforestation as a strategy to mitigate climate change, while also threatening human well-being in wildland-urban interface areas. On the other hand, grasslands store most of their carbon belowground (Farley et al., 2004; Jones & Donnelly, 2004; Tang et al., 2018), a carbon sink which is better protected from fire (Dass et al., 2018).

Afforestation also changes the hydrological cycle, mainly because an increase in carbon assimilation requires an increase in evapotranspiration (Law et al., 2002) and, as a result, water yields decrease at the local scale (Alvarez-Garreton et al., 2019; Farley et al., 2005; Jobbágy et al., 2013; Wang et al., 2020), increasing soil salinization and acidification (Jackson et al., 2005). These water yield losses increase with plantation age and when plantations are composed of broadleaf species (Farley et al., 2005). At wetter sites the absolute water losses are greater, but in drier sites the proportional losses are larger (Farley et al., 2005). These negative consequences on the hydrological cycle are especially relevant for areas where water is scarce and further reductions in its availability will create shortages for local populations (Bond et al., 2019; Feng et al., 2016; Wang et al., 2020). On the other hand, the increase in evapotranspiration due to afforestation can contribute to rain in neighbouring areas through a redistribution of water at the regional scale and increased albedo through the formation of clouds (Ellison et al., 2017; Hoek van Dijke et al., 2022). Further, nutrient cycles are also greatly modified by the conversion of treeless ecosystems into tree plantations by reducing litter decomposition (Araujo & Austin, 2015).

2.4 | Negative impacts on native biodiversity

Native plant and animal communities are also threatened by the replacement of treeless ecosystems by tree plantations, which drastically modifies native habitats (Araujo & Austin, 2015; Lipsey & Hockey, 2010) and reduces native biodiversity (Veldman et al., 2015). Afforestation reduces grassland plant species richness (Prangel et al., 2023) and Mediterranean heathland shrub species richness and cover, affecting especially short-lived and endemic species (Andrés & Ojeda, 2002). Afforestation of heathlands also reduces the diversity and abundance of flowers and pollinators (Pérez-Gómez et al., 2024). Grassland and shrubland plant richness and diversity loss due to afforestation is higher when exotic trees are planted (Bremer & Farley, 2010). In the case of old growth grasslands, the restoration of herbaceous plant diversity, lost through land use changes including afforestation, requires at least a hundred years (Nerlekar & Veldman, 2020). Grassland and shrubland plant and animal species have become threatened or even extinct due to afforestation

(Armstrong et al., 1998). Grassland bird diversity is negatively correlated with the extent of afforestation, which reduced the diversity of both endemic and threatened bird species (Allan et al., 1997), particularly affecting grassland specialists (Lipsey & Hockey, 2010).

Afforestation can also reduce the ecosystem services provided by the ecosystems which are replaced by trees. A recent study found a reduction in grassland pollination, provisioning of forage, wild food and medicinal herbs, as well as recreation and aesthetic value, due to afforestation (Prangel et al., 2023). Further, this land-use change causes a reduction of the area covered by grasslands and shrublands, the main forage source for extensive livestock grazing in many regions (Veldman et al., 2015, 2019). When afforestation is carried out planting non-native *Pinus* species (one of the most widely planted tree genera across the world), it also favours the invasion of non-native invasive animals (red deer and wild boar; Lantschner et al., 2013), which produce multiple negative impacts in native ecosystems, such as the alteration of soil functioning and biodiversity (Barrios-García et al., 2023), alteration of plant composition and structure (Barrios-García et al., 2014), and facilitation of the invasion of non-native trees (Nuñez et al., 2013). Finally, the harvest of tree plantations causes a massive disturbance that not only releases to the atmosphere a big part of the sequestered carbon (Achat et al., 2015; Peng et al., 2023) but can also further reduce native biodiversity (Chaudhary et al., 2016).

2.5 | Tree invasions exacerbate negative impacts of afforestation

Afforestation frequently causes tree invasions (Nuñez et al., 2017; Richardson et al., 1994; Shackleton et al., 2014; Simberloff et al., 2010), which produce impacts that are similar in some respects (Le Maitre et al., 2011; Nuñez et al., 2021; Rundel et al., 2014; Shackleton et al., 2014). However, tree plantations and invasions differ in key aspects. For instance, tree invasions are not circumscribed to a planted area, but affect an ever-increasing area as seeds are dispersed (Rundel et al., 2014), threatening native systems across entire landscapes surrounding tree plantations, including protected areas and (previously) well-conserved ecosystems (e.g. McConnachie et al., 2015; Peña et al., 2008). Another key difference is that tree invasions cover a broad range of tree densities, which tend to increase with time (Nuñez et al., 2017), as opposed to a standard density range for tree plantations. This wide variation in tree densities causes a broad variation in their impacts, a relationship described by density-impact curves, where generally higher densities cause larger impacts (Bradley et al., 2019; Yokomizo et al., 2009). Therefore, the impacts of tree invasions should be assessed in relation to the population density of the invader (Moyano et al., 2023; Paritsis et al., 2018; Taylor et al., 2016). As with the time since afforestation, the time since invasion also plays a key role on the impacts produced (Kumschick et al., 2015). However, unlike tree plantations, tree invasions are not composed of even-aged stands but

include a distribution of ages from seedlings to adults (similar to a native forest), which is difficult to characterize (Milani et al., 2020; Nuñez & Paritsis, 2018). Further, in the case of tree invasions, time since invasion interacts with invasion density in a way that their respective effects are difficult to disentangle (Milani et al., 2020; Nuñez & Paritsis, 2018). Because of these complexities, the effect of tree invasions on ecosystem carbon storage becomes highly context dependent (see also Sapsford et al., 2020).

As is the case with afforestation, tree invasions into treeless ecosystems will have highly variable effects on carbon sequestration and overall effect on climate change. While the impact of tree invasion on carbon sequestration has rarely been evaluated, one study shows that (similar to the effect of afforestation) tree invasions in grasslands increase plant biomass carbon sequestration across a gradient of precipitation but reduce soil carbon in sites with higher precipitation, to the extent of completely offsetting increases in plant biomass carbon (Jackson et al., 2002). As with afforestation, invasive trees reduce surface albedo of invaded grasslands (Nuñez et al., 2021), but this effect will be highly influenced by invasion density, and possibly by the variables that affect the impact of afforestation on albedo, such as precipitation, elevation and latitude (Li et al., 2015; Mykleby et al., 2017; Rohatyn et al., 2022; Rotenberg & Yakir, 2010), although further research is needed to confirm this. Tree invasion also increases fuel loads and fuel connectivity, potentially increasing fire intensity (Paritsis et al., 2018; Souza-Alonso et al., 2017; Taylor et al., 2017), which may release to the atmosphere large portions of the fixed carbon, undoing their positive effect on climate change mitigation (as is the case with afforestation). In fact, high density tree invasions produce a larger increase in fire hazard than tree plantations (Paritsis et al., 2018), and an increase in fire frequency can exacerbate the spread of invasive trees (Franzese & Raffaele, 2017; Souza-Alonso et al., 2017). Tree invasions into treeless ecosystems also contribute to other drivers of global change, for example, reducing grasslands and shrublands diversity (Davis et al., 2019; Franzese et al., 2017; Pyšek et al., 2012; Taylor et al., 2016), and productivity (Ferraina et al., 2021; Morford et al., 2022; Moyano et al., 2023), altering nutrient cycles and soil biotic communities (Castro-Díez et al., 2019; Dickie et al., 2014, 2022; Le Maitre et al., 2011; Sapsford et al., 2022), and reducing local water yield (de Wit et al., 2001; Le Maitre et al., 2000).

Woody plant invasions are also a potential threat to human health (Loss et al., 2022). Several important disease vectors, including mosquitoes and ticks, have wildlife hosts that are often associated with habitats dominated by trees and shrubs (Allan et al., 2010; Horncastle et al., 2005; Ostfeld et al., 2018), and some evidence points to woody plant invasions into (previously) treeless ecosystems as the impetus for elevated vector-borne disease infection in humans (Noden, Cote, et al., 2021; Noden & Dubie, 2017; Noden, Tanner, et al., 2021). Increasing woody plant invasions can concentrate populations of reservoir hosts (e.g. deer, birds and rodents) seeking nesting sites and refuge from predators (Maichak et al., 2022; Negasa et al., 2014), proliferating the abundance of mosquitoes and ticks. Such increases in vectors could potentially enhance disease risk for the humans living in

the region (Adalsteinsson et al., 2018; Noden, Cote, et al., 2021; Noden, Tanner, et al., 2021). Less work has been conducted in this research area, so it remains unknown when and where woody plants invasions can elevate vector-borne disease risk in humans. However, given that mosquitoes and ticks vector harmful diseases like West Nile, Malaria and Lyme disease (Anderson & Magnarelli, 2008; Campbell et al., 2002; LaDeau et al., 2007; Rothman et al., 2021), it is crucial to understand how tree invasions affect vector-borne disease risk before promoting them with the goal of climate change mitigation.

3 | THE WAY FORWARD AND POSSIBLE SOLUTIONS

While planting trees can potentially help mitigate climate change, afforestation should not be considered as the ultimate solution, but rather be integrated into a strategy including multiple approaches. Moreover, the potential for afforestation should not diminish efforts to reduce deforestation and forest degradation globally (Holl & Brancalion, 2020; Lewis et al., 2019; Mo et al., 2023). In fact, conservation and restoration of degraded forests should be prioritized over afforestation projects (Brancalion & Holl, 2020) since they have a much larger potential for carbon sequestration (Griscom et al., 2017; Lewis et al., 2019), especially tropical forests (Koch et al., 2021). In this regard, accurate mapping of different ecosystems through an understanding of landscape history is key to avoid misinterpretations of what areas constitute degraded forests that should be restored by replanting trees (Gillson et al., 2023; Parr et al., 2024; Veldman et al., 2015). Many afforestation efforts are dominated by non-native species, and this creates multiple potential risks and complex trade-offs among land use for different purposes involving carbon, biodiversity and economic activities. When considering afforestation projects and where to carry them out, we need to balance multiple ecological goals and seek to increase carbon storage without compromising other key aspects of native ecosystems, such as biodiversity, nutrient and hydrological cycles and fire regimes (Brancalion & Holl, 2020; Holl & Brancalion, 2020; Lindenmayer et al., 2012). A key tool for this purpose is risk analyses that assess potential risks to ecosystems, trade-offs between ecosystem services gained and lost, and uncertainties in ecosystem processes (Lindenmayer et al., 2012). Tree plantations should be avoided in vulnerable environments where the introduction of trees is likely to produce very negative impacts (Brundu et al., 2020; Veldman et al., 2015). In this line, the new Chilean Climate Change Law excludes monospecific tree plantations as a natural climate solution because their benefits are outweighed by the decline they produce in ecosystem services (Gómez-González et al., 2023). Considering both current and future climatic conditions is critical to ensure that the new tree plantations prosper under future climates (e.g. Shephard & Maggard, 2023).

More knowledge in plant ecology is needed to better understand the effects of introducing trees into naturally treeless areas, as well as the interactions between these effects and the key role

of context when recommending afforestation for different scenarios. The high variability in the impact of afforestation on soil carbon and albedo creates the necessity to explicitly consider both effects in all cases, to avoid groundless assumptions of carbon storage and climate cooling effects. We propose that future carbon certification standards for afforestation projects demand the measurement of soil carbon throughout the whole soil depth (to comprehensively assess soil carbon sinks) and of surface albedo (to evaluate the net warming or cooling effect). Likewise, fire risk should be explicitly considered across spatial scales when planning where and which tree species to plant (Leverkus et al., 2022; Lindenmayer et al., 2023; Stevens & Bond, 2024). Possible practices to reduce fire hazard are avoiding fire-prone/flammable tree species, managing fuels to make afforestation less flammable (e.g. pruning lower branches; Paritsis et al., 2018) and regularly updating fire management plans (Lindenmayer et al., 2023). Further, tree plantations should be kept for longer periods to maximize carbon sequestration and then harvested for longer-lived products (Griscom et al., 2017; Houghton & Nassikas, 2018).

In cases where tree invasions are not successfully prevented, their spread should be controlled. The numerous negative impacts of tree invasions originating from afforestation bring the need to actively manage them. Therefore, certification standards should also require that plantation owners become responsible for the management of potential tree invasions. One possibility to reduce tree invasions is the use of forestry species that are not invasive (Rejmánek & Richardson, 1996, 2013). Highly invasive non-native tree species which tend to cause a wide range of negative impacts, from biodiversity reduction to increases in fire hazard and water consumption, should be avoided. Future research should study the impact of tree invasions on carbon sequestration of treeless ecosystems and overall cooling effects across a wide range of contexts (tree density, precipitation, altitude, latitude) (Sapsford et al., 2020), so that invasions are not favoured by the unfounded assumption that they help mitigate climate change. Even if the overall effect of tree invasions increases carbon sequestration this positive impact must be counterbalanced with the potential negative impacts these invasions generate (Nuñez et al., 2021). We hope this review will stimulate new research on natural climate solutions and offer a guide to future updates in certification standards for afforestation projects.

AUTHOR CONTRIBUTIONS

Jaime Moyano and Martin A. Nuñez designed the structure of the review and led the writing of the manuscript. All authors contributed with ideas and with the writing of all drafts. All authors gave final approval for publication.

ACKNOWLEDGEMENTS

We thank Tala Awada for providing information (location and history) of the largest afforestation in USA, located in Nebraska. We are very grateful with Mauro Sarasola and Brian W. van Wilgen for providing pictures of afforestation projects in Patagonia (Argentina) and South Africa, respectively.

FUNDING INFORMATION

Juan Paritsis was funded by PICT 2019-406. Aníbal Pauchard was funded by ANID/Basal FB210006.

CONFLICT OF INTEREST STATEMENT

The authors declare no conflict of interest.

PEER REVIEW

The peer review history for this article is available at <https://www.webofscience.com/api/gateway/wos/peer-review/10.1111/1365-2745.14300>.

DATA AVAILABILITY STATEMENT

This paper included no new data.

ORCID

Jaime Moyano  <https://orcid.org/0000-0002-7072-0527>

Romina D. Dimarco  <https://orcid.org/0000-0002-1751-0643>

Juan Paritsis  <https://orcid.org/0000-0003-1626-8442>

Tess Peterson  <https://orcid.org/0009-0003-1737-8114>

Duane A. Peltzer  <https://orcid.org/0000-0001-7724-3738>

Kerri M. Crawford  <https://orcid.org/0000-0003-4421-2243>

Matthew A. McCary  <https://orcid.org/0000-0002-7846-7159>

Kimberley T. Davis  <https://orcid.org/0000-0001-9727-374X>

Aníbal Pauchard  <https://orcid.org/0000-0003-1284-3163>

Martin A. Nuñez  <https://orcid.org/0000-0003-0324-5479>

REFERENCES

- Achat, D. L., Fortin, M., Landmann, G., Ringeval, B., & Augusto, L. (2015). Forest soil carbon is threatened by intensive biomass harvesting. *Scientific Reports*, 5(1), Article 1. <https://doi.org/10.1038/srep15991>
- Adalsteinsson, S. A., Shriver, W. G., Hojgaard, A., Bowman, J. L., Brisson, D., D'Amico, V., & Buler, J. J. (2018). Multiflora rose invasion amplifies prevalence of Lyme disease pathogen, but not necessarily Lyme disease risk. *Parasites & Vectors*, 11(1), 54. <https://doi.org/10.1186/s13071-018-2623-0>
- Allan, B. F., Dutra, H. P., Goessling, L. S., Barnett, K., Chase, J. M., Marquis, R. J., Pang, G., Storch, G. A., Thach, R. E., & Orrock, J. L. (2010). Invasive honeysuckle eradication reduces tick-borne disease risk by altering host dynamics. *Proceedings of the National Academy of Sciences of the United States of America*, 107(43), 18523–18527. <https://doi.org/10.1073/pnas.1008362107>
- Allan, D. G., Harrison, J. A., Navarro, R. A., van Wilgen, B. W., & Thompson, M. W. (1997). The impact of commercial afforestation on bird populations in Mpumalanga Province, South Africa—Insights from bird-atlas data. *Biological Conservation*, 79(2), 173–185. [https://doi.org/10.1016/S0006-3207\(96\)00098-5](https://doi.org/10.1016/S0006-3207(96)00098-5)
- Alvarez-Garretón, C., Lara, A., Boisier, J. P., & Galleguillos, M. (2019). The impacts of native forests and Forest plantations on water supply in Chile. *Forests*, 10(6), Article 6. <https://doi.org/10.3390/f10060473>
- Anderson, C. M., DeFries, R. S., Litterman, R., Matson, P. A., Nepstad, D. C., Pacala, S., Schlesinger, W. H., Shaw, M. R., Smith, P., Weber, C., & Field, C. B. (2019). Natural climate solutions are not enough. *Science*, 363(6430), 933–934. <https://doi.org/10.1126/science.aaw2741>
- Anderson, J. F., & Magnarelli, L. A. (2008). Biology of ticks. *Tick-Borne Diseases, Part I: Lyme Disease*, 22(2), 195–215. <https://doi.org/10.1016/j.idc.2007.12.006>

- Andrés, C., & Ojeda, F. (2002). Effects of afforestation with pines on woody plant diversity of Mediterranean heathlands in southern Spain. *Biodiversity and Conservation*, 11(9), 1511–1520. <https://doi.org/10.1023/A:1016850708890>
- Araujo, P. I., & Austin, A. T. (2015). A shady business: Pine afforestation alters the primary controls on litter decomposition along a precipitation gradient in Patagonia, Argentina. *Journal of Ecology*, 103(6), 1408–1420. <https://doi.org/10.1111/1365-2745.12433>
- Archibald, S., Lehmann, C. E. R., Gómez-Dans, J. L., & Bradstock, R. A. (2013). Defining pyromes and global syndromes of fire regimes. *Proceedings of the National Academy of Sciences of the United States of America*, 110(16), 6442–6447. <https://doi.org/10.1073/pnas.1211466110>
- Armstrong, A. J., Benn, G., Bowland, A. E., Goodman, P. S., Johnson, D. N., Maddock, A. H., & Scott-Shaw, C. R. (1998). Plantation forestry in South Africa and its impact on biodiversity. *Southern African Forestry Journal*, 182(1), 59–65. <https://doi.org/10.1080/10295925.1998.9631191>
- Arora, V. K., & Montenegro, A. (2011). Small temperature benefits provided by realistic afforestation efforts. *Nature Geoscience*, 4(8), 514–518. <https://doi.org/10.1038/ngeo1182>
- Bai, Y., & Cotrufo, M. F. (2022). Grassland soil carbon sequestration: Current understanding, challenges, and solutions. *Science*, 377(6606), 603–608. <https://doi.org/10.1126/science.abo2380>
- Baldocchi, D., & Penuelas, J. (2019). The physics and ecology of mining carbon dioxide from the atmosphere by ecosystems. *Global Change Biology*, 25(4), 1191–1197. <https://doi.org/10.1111/gcb.14559>
- Bárcena, T. G., Kiær, L. P., Vesterdal, L., Stefánsdóttir, H. M., Gundersen, P., & Sigurdsson, B. D. (2014). Soil carbon stock change following afforestation in northern Europe: A meta-analysis. *Global Change Biology*, 20(8), 2393–2405. <https://doi.org/10.1111/gcb.12576>
- Bardgett, R. D., Bullock, J. M., Lavorel, S., Manning, P., Schaffner, U., Ostle, N., Chomel, M., Durigan, G. L., Fry, E., Johnson, D., Lavalley, J. M., Le Provost, G., Luo, S., Png, K., Sankaran, M., Hou, X., Zhou, H., Ma, L., Ren, W., ... Shi, H. (2021). Combatting global grassland degradation. *Nature Reviews Earth and Environment*, 2(10), 720–735. <https://doi.org/10.1038/s43017-021-00207-2>
- Barrios-García, M. N., Classen, A. T., & Simberloff, D. (2014). Disparate responses of above- and belowground properties to soil disturbance by an invasive mammal. *Ecosphere*, 5(4), art44. <https://doi.org/10.1890/ES13-00290.1>
- Barrios-García, M. N., Gonzalez-Polo, M., Simberloff, D., & Classen, A. T. (2023). Wild boar rooting impacts soil function differently in different plant community types. *Biological Invasions*, 25(2), 583–592. <https://doi.org/10.1007/s10530-022-02936-x>
- Bastin, J.-F., Finegold, Y., Garcia, C., Mollicone, D., Rezende, M., Routh, D., Zohner, C. M., & Crowther, T. W. (2019). The global tree restoration potential. *Science*, 365(6448), 76–79. <https://doi.org/10.1126/science.aax0848>
- Berthrong, S. T., Jobbágy, E. G., & Jackson, R. B. (2009). A global meta-analysis of soil exchangeable cations, pH, carbon, and nitrogen with afforestation. *Ecological Applications*, 19(8), 2228–2241. <https://doi.org/10.1890/08-1730.1>
- Berthrong, S. T., Piñeiro, G., Jobbágy, E. G., & Jackson, R. B. (2012). Soil C and N changes with afforestation of grasslands across gradients of precipitation and plantation age. *Ecological Applications*, 22(1), 76–86.
- Bond, W. J., Stevens, N., Midgley, G. F., & Lehmann, C. E. R. (2019). The trouble with trees: Afforestation plans for Africa. *Trends in Ecology & Evolution*, 34(11), 963–965. <https://doi.org/10.1016/j.tree.2019.08.003>
- Bowman, D. M. J. S., Kolden, C. A., Abatzoglou, J. T., Johnston, F. H., van der Werf, G. R., & Flannigan, M. (2020). Vegetation fires in the Anthropocene. *Nature Reviews Earth and Environment*, 1(10), 500–515. <https://doi.org/10.1038/s43017-020-0085-3>
- Bradley, B. A., Laginhas, B. B., Whitlock, R., Allen, J. M., Bates, A. E., Bernatchez, G., Diez, J. M., Early, R., Lenoir, J., Vilà, M., & Sorte, C. J. B. (2019). Disentangling the abundance–impact relationship for invasive species. *Proceedings of the National Academy of Sciences of the United States of America*, 116(20), 9919–9924. <https://doi.org/10.1073/pnas.1818081116>
- Brancalion, P. H. S., & Holl, K. D. (2020). Guidance for successful tree planting initiatives. *Journal of Applied Ecology*, 57(12), 2349–2361. <https://doi.org/10.1111/1365-2664.13725>
- Bremer, L. L., & Farley, K. A. (2010). Does plantation forestry restore biodiversity or create green deserts? A synthesis of the effects of land-use transitions on plant species richness. *Biodiversity and Conservation*, 19(14), 3893–3915. <https://doi.org/10.1007/s10531-010-9936-4>
- Bright, R. M., Zhao, K., Jackson, R. B., & Cherubini, F. (2015). Quantifying surface albedo and other direct biogeophysical climate forcings of forestry activities. *Global Change Biology*, 21(9), 3246–3266. <https://doi.org/10.1111/gcb.12951>
- Brodribb, T. J., Powers, J., Cochar, H., & Choat, B. (2020). Hanging by a thread? Forests and drought. *Science*, 368(6488), 261–266. <https://doi.org/10.1126/science.aat7631>
- Brundu, G., Pauchard, A., Pyšek, P., Pergl, J., Bindewald, A. M., Brunori, A., Canavan, S., Campagnaro, T., Celesti-Grapow, L., Dechoum, M. D. S., & Dufour-Dror, J. M. (2020). Global guidelines for the sustainable use of non-native trees to prevent tree invasions and mitigate their negative impacts. *NeoBiota*, 61, 65–116.
- Cabon, A., Kannenberg, S. A., Arain, A., Babst, F., Baldocchi, D., Belmecheri, S., Delpierre, N., Guerrieri, R., Maxwell, J. T., McKenzie, S., Meinzer, F. C., Moore, D. J. P., Pappas, C., Rocha, A. V., Szejner, P., Ueyama, M., Ulrich, D., Vincke, C., Voelker, S. L., ... Anderegg, W. R. L. (2022). Cross-biome synthesis of source versus sink limits to tree growth. *Science*, 376(6594), 758–761. <https://doi.org/10.1126/science.abm4875>
- Campbell, G. L., Marfin, A. A., Lanciotti, R. S., & Gubler, D. J. (2002). West Nile virus. *The Lancet Infectious Diseases*, 2(9), 519–529.
- Castro-Díez, P., Vaz, A. S., Silva, J. S., van Loo, M., Alonso, Á., Aponte, C., Bayón, Á., Bellingham, P. J., Chiuffo, M. C., DiManno, N., Julian, K., Kandert, S., La Porta, N., Marchante, H., Maule, H. G., Mayfield, M. M., Metcalfe, D., Monteverdi, M. C., Núñez, M. A., ... Godoy, O. (2019). Global effects of non-native tree species on multiple ecosystem services. *Biological Reviews*, 94(4), 1477–1501. <https://doi.org/10.1111/brv.12511>
- Chaudhary, A., Burivalova, Z., Koh, L. P., & Hellweg, S. (2016). Impact of forest management on species richness: Global meta-analysis and economic trade-offs. *Scientific Reports*, 6(1), Article 1. <https://doi.org/10.1038/srep23954>
- Cohen, S. E. (2004). *Planting nature: Trees and the manipulation of environmental stewardship in America*. University of California Press.
- Cook, B. I., Mankin, J. S., Marvel, K., Williams, A. P., Smerdon, J. E., & Anchukaitis, K. J. (2020). Twenty-first century drought projections in the CMIP6 forcing scenarios. *Earth's Future*, 8(6), e2019EF001461. <https://doi.org/10.1029/2019EF001461>
- Dass, P., Houlton, B. Z., Wang, Y., & Warlind, D. (2018). Grasslands may be more reliable carbon sinks than forests in California. *Environmental Research Letters*, 13(7), 074027. <https://doi.org/10.1088/1748-9326/aac3b9>
- Davis, D. K., & Robbins, P. (2018). Ecologies of the colonial present: Pathological forestry from the taux de boisement to civilized plantations. *Environment and Planning E: Nature and Space*, 1(4), 447–469.
- Davis, K. T., Callaway, R. M., Fajardo, A., Pauchard, A., Nuñez, M. A., Brooker, R. W., Maxwell, B. D., Dimarco, R. D., Peltzer, D. A., Mason, B., Ruotsalainen, S., McIntosh, A. C. S., Pakeman, R. J., Smith, A. L., & Gundale, M. J. (2019). Severity of impacts of an introduced species corresponds with regional eco-evolutionary experience. *Ecography*, 42(1), 12–22. <https://doi.org/10.1111/ecog.04014>
- de Wit, M. P., Crookes, D. J., & van Wilgen, B. W. (2001). Conflicts of interest in environmental management: Estimating the costs and

- benefits of a tree invasion. *Biological Invasions*, 3(2), 167–178. <https://doi.org/10.1023/A:1014563702261>
- Deng, L., Zhu, G., Tang, Z., & Shangguan, Z. (2016). Global patterns of the effects of land-use changes on soil carbon stocks. *Global Ecology and Conservation*, 5, 127–138. <https://doi.org/10.1016/j.gecco.2015.12.004>
- Dickie, I. A., Sprague, R., Green, J., Peltzer, D. A., Orwin, K., & Sapsford, S. (2022). Applying ecological research to improve long-term outcomes of wilding conifer management. *New Zealand Journal of Ecology*, 46(2), 1–16.
- Dickie, I. A., St John, M. G., Yeates, G. W., Morse, C. W., Bonner, K. I., Orwin, K., & Peltzer, D. A. (2014). Belowground legacies of *Pinus contorta* invasion and removal result in multiple mechanisms of invasional meltdown. *AoB Plants*, 6, plu056. <https://doi.org/10.1093/aobpla/plu056>
- Djoudi, H., Locatelli, B., Pehou, C., Colloff, M. J., Elias, M., Gautier, D., Gorddard, R., Vinceti, B., & Zida, M. (2022). Trees as brokers in social networks: Cascades of rights and benefits from a cultural keystone species. *Ambio*, 51(10), 2137–2154. <https://doi.org/10.1007/s13280-022-01733-z>
- Duarte-Guardia, S., Peri, P., Amelung, W., Thomas, E., Borchard, N., Baldi, G., Cowie, A., & Ladd, B. (2020). Biophysical and socioeconomic factors influencing soil carbon stocks: A global assessment. *Mitigation and Adaptation Strategies for Global Change*, 25(6), 1129–1148. <https://doi.org/10.1007/s11027-020-09926-1>
- Dube, F., Zagal, E., Stolpe, N., & Espinosa, M. (2009). The influence of land-use change on the organic carbon distribution and microbial respiration in a volcanic soil of the Chilean Patagonia. *Forest Ecology and Management*, 257(8), 1695–1704. <https://doi.org/10.1016/j.foreco.2009.01.044>
- Eclesia, R. P., Jobbagy, E. G., Jackson, R. B., Biganzoli, F., & Piñeiro, G. (2012). Shifts in soil organic carbon for plantation and pasture establishment in native forests and grasslands of South America. *Global Change Biology*, 18(10), 3237–3251. <https://doi.org/10.1111/j.1365-2486.2012.02761.x>
- Ellison, D., Morris, C. E., Locatelli, B., Sheil, D., Cohen, J., Murdiyarto, D., Gutierrez, V., van Noordwijk, M., Creed, I. F., Pokorny, J., Gaveau, D., Spracklen, D. V., Tobella, A. B., Ilstedt, U., Teuling, A. J., Gebrehiwot, S. G., Sands, D. C., Muys, B., Verbist, B., ... Sullivan, C. A. (2017). Trees, forests and water: Cool insights for a hot world. *Global Environmental Change*, 43, 51–61. <https://doi.org/10.1016/j.gloenvcha.2017.01.002>
- Elmendorf, W. (2008). The importance of trees and nature in community: A review of the relative literature. *Arboriculture & Urban Forestry*, 34(3), 152–156.
- Eze, S., Palmer, S. M., & Chapman, P. J. (2018). Soil organic carbon stock in grasslands: Effects of inorganic fertilizers, liming and grazing in different climate settings. *Journal of Environmental Management*, 223, 74–84. <https://doi.org/10.1016/j.jenvman.2018.06.013>
- Farley, K. A., Jobbágy, E. G., & Jackson, R. B. (2005). Effects of afforestation on water yield: A global synthesis with implications for policy. *Global Change Biology*, 11(10), 1565–1576. <https://doi.org/10.1111/j.1365-2486.2005.01011.x>
- Farley, K. A., Kelly, E. F., & Hofstede, R. G. M. (2004). Soil organic carbon and water retention after conversion of grasslands to pine plantations in the Ecuadorian Andes. *Ecosystems*, 7(7), 729–739. <https://doi.org/10.1007/s10021-004-0047-5>
- Feng, X., Fu, B., Piao, S., Wang, S., Ciais, P., Zeng, Z., Lü, Y., Zeng, Y., Li, Y., Jiang, X., & Wu, B. (2016). Revegetation in China's Loess Plateau is approaching sustainable water resource limits. *Nature Climate Change*, 6(11), Article 11. <https://doi.org/10.1038/nclimate3092>
- Ferraina, A., Molina, C. D., Mazia, N., Piñeiro, G., Miranda, I., & Chaneton, E. J. (2021). Tree invasion in secondary grasslands diminishes herbaceous biomass and diversity: A study of mechanisms behind the process. *Journal of Vegetation Science*, 32(5), e13074. <https://doi.org/10.1111/jvs.13074>
- Franzese, J., & Raffaele, E. (2017). Fire as a driver of pine invasions in the southern hemisphere: A review. *Biological Invasions*, 19(8), 2237–2246. <https://doi.org/10.1007/s10530-017-1435-z>
- Franzese, J., Urrutia, J., García, R. A., Taylor, K., & Pauchard, A. (2017). Pine invasion impacts on plant diversity in Patagonia: Invader size and invaded habitat matter. *Biological Invasions*, 19(3), 1015–1027. <https://doi.org/10.1007/s10530-016-1344-6>
- Friedlingstein, P., Jones, M. W., O'Sullivan, M., Andrew, R. M., Bakker, D. C. E., Hauck, J., Le Quéré, C., Peters, G. P., Peters, W., Pongratz, J., Sitch, S., Canadell, J. G., Ciais, P., Jackson, R. B., Alin, S. R., Anthoni, P., Bates, N. R., Becker, M., Bellouin, N., ... Zeng, J. (2022). Global carbon budget 2021. *Earth System Science Data*, 14(4), 1917–2005. <https://doi.org/10.5194/essd-14-1917-2022>
- Friggens, N. L., Hester, A. J., Mitchell, R. J., Parker, T. C., Subke, J.-A., & Wookey, P. A. (2020). Tree planting in organic soils does not result in net carbon sequestration on decadal timescales. *Global Change Biology*, 26(9), 5178–5188. <https://doi.org/10.1111/gcb.15229>
- Gillson, L., Hoffman, M. T., Gell, P. A., Ekblom, A., & Bond, W. J. (2023). Trees, carbon, and the psychology of landscapes. *Trends in Ecology & Evolution*, 21, S0169-5347(23)00326-9. <https://doi.org/10.1016/j.tree.2023.11.008>
- Gómez-González, S., Miranda, A., Hoyos-Santillan, J., Lara, A., Moraga, P., & Pausas, J. G. (2023). Afforestation and climate mitigation: Lessons from Chile. *Trends in Ecology & Evolution*, 39(1), 5–8. <https://doi.org/10.1016/j.tree.2023.09.014>
- Griscom, B. W., Adams, J., Ellis, P. W., Houghton, R. A., Lomax, G., Miteva, D. A., Schlesinger, W. H., Shoch, D., Siikamäki, J. V., Smith, P., Woodbury, P., Zganjar, C., Blackman, A., Campari, J., Conant, R. T., Delgado, C., Elias, P., Gopalakrishna, T., Hamsik, M. R., ... Fargione, J. (2017). Natural climate solutions. *Proceedings of the National Academy of Sciences of the United States of America*, 114(44), 11645–11650. <https://doi.org/10.1073/pnas.1710465114>
- Guerrero, F., Carmona, C., Hernández, C., Toledo, M., Arriagada, A., Espinoza, L., Bergmann, J., Taborga, L., Yañez, K., Carrasco, Y., & Muñoz, A. A. (2022). Drivers of flammability of *Eucalyptus globulus* Labill leaves: Terpenes, essential oils, and moisture content. *Forests*, 13(6), Article 6. <https://doi.org/10.3390/f13060908>
- Guo, L. B., & Gifford, R. M. (2002). Soil carbon stocks and land use change: A meta analysis. *Global Change Biology*, 8(4), 345–360. <https://doi.org/10.1046/j.1354-1013.2002.00486.x>
- Han, K. T. (2007). Responses to six major terrestrial biomes in terms of scenic beauty, preference, and restorativeness. *Environment and Behavior*, 39(4), 529–556.
- Hoek van Dijke, A. J., Herold, M., Mallick, K., Benedict, I., Machwitz, M., Schlerf, M., Pranindita, A., Theeuwens, J. J. E., Bastin, J.-F., & Teuling, A. J. (2022). Shifts in regional water availability due to global tree restoration. *Nature Geoscience*, 15(5), Article 5. <https://doi.org/10.1038/s41561-022-00935-0>
- Holl, K. D., & Brancalion, P. H. S. (2020). Tree planting is not a simple solution. *Science*, 368(6491), 580–581. <https://doi.org/10.1126/science.aba8232>
- Hong, S., Yin, G., Piao, S., Dybzinski, R., Cong, N., Li, X., Wang, K., Peñuelas, J., Zeng, H., & Chen, A. (2020). Divergent responses of soil organic carbon to afforestation. *Nature Sustainability*, 3(9), Article 9. <https://doi.org/10.1038/s41893-020-0557-y>
- Horncastle, V. J., Hellgren, E. C., Mayer, P. M., Ganguli, A. C., Engle, D. M., & Leslie, D. M. (2005). Implications of invasion by *Juniperus virginiana* on small mammals in the southern Great Plains. *Journal of Mammalogy*, 86(6), 1144–1155.
- Houghton, R. A., & Nassikas, A. A. (2018). Negative emissions from stopping deforestation and forest degradation, globally. *Global Change Biology*, 24(1), 350–359. <https://doi.org/10.1111/gcb.13876>
- IPCC. (2022). *Climate change 2022: Impacts, adaptation and vulnerability* (H.-O. Pörtner, D. C. Roberts, M. Tignor, E. S. Poloczanska, K. Mintenbeck, A. Alegria, M. Craig, S. Langsdorf, S. Lösche, V.

- Möller, A. Okem, & B. Rama, Eds.). Cambridge University Press. <https://doi.org/10.1017/9781009325844>
- Jackson, R. B., Banner, J. L., Jobbágy, E. G., Pockman, W. T., & Wall, D. H. (2002). Ecosystem carbon loss with woody plant invasion of grasslands. *Nature*, 418(6898), Article 6898. <https://doi.org/10.1038/nature00910>
- Jackson, R. B., Jobbágy, E. G., Avissar, R., Roy, S. B., Barrett, D. J., Cook, C. W., Farley, K. A., le Maitre, D. C., McCarl, B. A., & Murray, B. C. (2005). Trading water for carbon with biological carbon sequestration. *Science*, 310(5756), 1944–1947. <https://doi.org/10.1126/science.1119282>
- Jiang, M., Medlyn, B. E., Drake, J. E., Duursma, R. A., Anderson, I. C., Barton, C. V. M., Boer, M. M., Carrillo, Y., Castañeda-Gómez, L., Collins, L., Crous, K. Y., De Kauwe, M. G., dos Santos, B. M., Emmerson, K. M., Facey, S. L., Gherlenda, A. N., Gimeno, T. E., Hasegawa, S., Johnson, S. N., ... Ellsworth, D. S. (2020). The fate of carbon in a mature forest under carbon dioxide enrichment. *Nature*, 580(7802), 227–231. <https://doi.org/10.1038/s41586-020-2128-9>
- Jobbágy, E. G., Acosta, A. M., & Noretto, M. D. (2013). Rendimiento hídrico en cuencas primarias bajo pastizales y plantaciones de pino de las sierras de Córdoba (Argentina). *Ecología Austral*, 23(2), 87–96.
- Jolly, W. M., Cochrane, M. A., Freeborn, P. H., Holden, Z. A., Brown, T. J., Williamson, G. J., & Bowman, D. M. J. S. (2015). Climate-induced variations in global wildfire danger from 1979 to 2013. *Nature Communications*, 6(1), Article 1. <https://doi.org/10.1038/ncomm8537>
- Jones, M. B., & Donnelly, A. (2004). Carbon sequestration in temperate grassland ecosystems and the influence of management, climate and elevated CO₂. *New Phytologist*, 164(3), 423–439. <https://doi.org/10.1111/j.1469-8137.2004.01201.x>
- Kaine, G., Edwards, P., Polyakov, M., & Stahlmann-Brown, P. (2023). Who knew afforestation was such a challenge? Motivations and impediments to afforestation policy in New Zealand. *Forest Policy and Economics*, 154, 103031.
- Kemppinen, K. M. S., Collins, P. M., Hole, D. G., Wolf, C., Ripple, W. J., & Gerber, L. R. (2020). Global reforestation and biodiversity conservation. *Conservation Biology*, 34(5), 1221–1228. <https://doi.org/10.1111/cobi.13478>
- Kitzberger, T., Tiribelli, F., Barberá, I., Gowda, J. H., Morales, J. M., Zalazar, L., & Paritsis, J. (2022). Projections of fire probability and ecosystem vulnerability under 21st century climate across a trans-Andean productivity gradient in Patagonia. *Science of the Total Environment*, 839, 156303. <https://doi.org/10.1016/j.scitotenv.2022.156303>
- Koch, A., Brierley, C., & Lewis, S. L. (2021). Effects of earth system feedbacks on the potential mitigation of large-scale tropical forest restoration. *Biogeosciences*, 18(8), 2627–2647. <https://doi.org/10.5194/bg-18-2627-2021>
- Kropp, H., Loranty, M. M., Natali, S. M., Kholodov, A. L., Rocha, A. V., Myers-Smith, I., Abbot, B. W., Abermann, J., Blanc-Betes, E., Blok, D., Blume-Werry, G., Boike, J., Breen, A. L., Cahoon, S. M. P., Christiansen, C. T., Douglas, T. A., Epstein, H. E., Frost, G. V., Goeckede, M., ... Lund, M. (2020). Shallow soils are warmer under trees and tall shrubs across Arctic and boreal ecosystems. *Environmental Research Letters*, 16(1), 015001. <https://doi.org/10.1088/1748-9326/abc994>
- Kumschick, S., Gaertner, M., Vilà, M., Essl, F., Jeschke, J. M., Pyšek, P., Ricciardi, A., Bacher, S., Blackburn, T. M., Dick, J. T. A., Evans, T., Hulme, P. E., Kühn, I., Mrugała, A., Pergl, J., Rabitsch, W., Richardson, D. M., Sendek, A., & Winter, M. (2015). Ecological impacts of alien species: Quantification, scope, caveats, and recommendations. *BioScience*, 65(1), 55–63. <https://doi.org/10.1093/biosci/biu193>
- LaDeau, S. L., Kilpatrick, A. M., & Marra, P. P. (2007). West Nile virus emergence and large-scale declines of North American bird populations. *Nature*, 447(7145), 710–713.
- Laganière, J., Angers, D. A., & Paré, D. (2010). Carbon accumulation in agricultural soils after afforestation: A meta-analysis. *Global Change Biology*, 16(1), 439–453. <https://doi.org/10.1111/j.1365-2486.2009.01930.x>
- Lantschner, M.-V., Rusch, V., & Hayes, J. P. (2013). Do exotic pine plantations favour the spread of invasive herbivorous mammals in Patagonia? *Austral Ecology*, 38(3), 338–345. <https://doi.org/10.1111/j.1442-9993.2012.02411.x>
- Law, B. E., Falge, E., Gu, L., Baldocchi, D. D., Bakwin, P., Berbigier, P., Davis, K., Dolman, A. J., Falk, M., Fuentes, J. D., Goldstein, A., Granier, A., Grelle, A., Hollinger, D., Janssens, I. A., Jarvis, P., Jensen, N. O., Katul, G., Mahli, Y., ... Wofsy, S. (2002). Environmental controls over carbon dioxide and water vapor exchange of terrestrial vegetation. *Agricultural and Forest Meteorology*, 113(1), 97–120. [https://doi.org/10.1016/S0168-1923\(02\)00104-1](https://doi.org/10.1016/S0168-1923(02)00104-1)
- Le Maitre, D. C., Gaertner, M., Marchante, E., Ens, E.-J., Holmes, P. M., Pauchard, A., O'Farrell, P. J., Rogers, A. M., Blanchard, R., Blignaut, J., & Richardson, D. M. (2011). Impacts of invasive Australian acacias: Implications for management and restoration. *Diversity and Distributions*, 17(5), 1015–1029. <https://doi.org/10.1111/j.1472-4642.2011.00816.x>
- Le Maitre, D. C., Versfeld, D. B., & Chapman, R. A. (2000). *Impact of invading alien plants on surface water resources in South Africa: A preliminary assessment*. CSIR Division of Water, Environment and Forestry Technology.
- Leverkus, A. B., Thorn, S., Lindenmayer, D. B., & Pausas, J. G. (2022). Tree planting goals must account for wildfires. *Science*, 376(6593), 588–589. <https://doi.org/10.1126/science.abp8259>
- Lewis, S. L., Wheeler, C. E., Mitchard, E. T. A., & Koch, A. (2019). Restoring natural forests is the best way to remove atmospheric carbon. *Nature*, 568(7750), 25–28. <https://doi.org/10.1038/d41586-019-01026-8>
- Li, L., Hosseiniaghdam, E., Drijber, R., Jeske, E., Awada, T., Hiller, J., & Kaiser, M. (2023). Conversion of native grassland to coniferous forests decreased stocks of soil organic carbon and microbial biomass. *Plant and Soil*, 491, 591–604. <https://doi.org/10.1007/s11104-023-06138-9>
- Li, Y., Zhao, M., Motesharrei, S., Mu, Q., Kalnay, E., & Li, S. (2015). Local cooling and warming effects of forests based on satellite observations. *Nature Communications*, 6(1), Article 1. <https://doi.org/10.1038/ncomms7603>
- Lindenmayer, D. B., Hulvey, K. B., Hobbs, R. J., Colyvan, M., Felton, A., Possingham, H., Steffen, W., Wilson, K., Youngentob, K., & Gibbons, P. (2012). Avoiding bio-perversity from carbon sequestration solutions. *Conservation Letters*, 5(1), 28–36. <https://doi.org/10.1111/j.1755-263X.2011.00213.x>
- Lindenmayer, D. B., Yebra, M., & Cary, G. J. (2023). Perspectives: Better managing fire in flammable tree plantations. *Forest Ecology and Management*, 528, 120641. <https://doi.org/10.1016/j.foreco.2022.120641>
- Lipsey, M. K., & Hockey, P. A. R. (2010). Do ecological networks in south African commercial forests benefit grassland birds? A case study of a pine plantation in KwaZulu-Natal. *Agriculture, Ecosystems & Environment*, 137(1), 133–142. <https://doi.org/10.1016/j.agee.2010.01.013>
- Loss, S. R., Noden, B. H., & Fuhlendorf, S. D. (2022). Woody plant encroachment and the ecology of vector-borne diseases. *Journal of Applied Ecology*, 59(2), 420–430.
- Maichak, C., Hiney, K., Loss, S. R., Talley, J. L., & Noden, B. H. (2022). Effects of woody plant encroachment by eastern redcedar on mosquito communities in Oklahoma. *Journal of Vector Ecology*, 47(2), 179–187.
- McConnachie, M. M., van Wilgen, B. W., Richardson, D. M., Ferraro, P. J., & Forsyth, A. T. (2015). Estimating the effect of plantations on pine invasions in protected areas: A case study from South Africa. *Journal of Applied Ecology*, 52(1), 110–118. <https://doi.org/10.1111/1365-2664.12366>

- McWethy, D. B., Pauchard, A., García, R. A., Holz, A., González, M. E., Veblen, T. T., Stahl, J., & Currey, B. (2018). Landscape drivers of recent fire activity (2001–2017) in south-central Chile. *PLoS ONE*, 13(8), e0201195. <https://doi.org/10.1371/journal.pone.0201195>
- Milani, T., Jobbágy, E. G., Nuñez, M. A., Ferrero, M. E., Baldi, G., & Teste, F. P. (2020). Stealth invasions on the rise: Rapid long-distance establishment of exotic pines in mountain grasslands of Argentina. *Biological Invasions*, 22(10), 2989–3001. <https://doi.org/10.1007/s10530-020-02303-8>
- Mo, L., Zohner, C. M., Reich, P. B., Liang, J., de Miguel, S., Nabuurs, G.-J., Renner, S. S., van den Hoogen, J., Araza, A., Herold, M., Mirzagholi, L., Ma, H., Averill, C., Phillips, O. L., Gamarra, J. G. P., Hordijk, I., Routh, D., Abegg, M., Adou Yao, Y. C., ... Crowther, T. W. (2023). Integrated global assessment of the natural forest carbon potential. *Nature*, 624, 92–101. <https://doi.org/10.1038/s41586-023-06723-z>
- Morford, S. L., Allred, B. W., Twidwell, D., Jones, M. O., Maestas, J. D., Roberts, C. P., & Naugle, D. E. (2022). Herbaceous production lost to tree encroachment in United States rangelands. *Journal of Applied Ecology*, 59(12), 2971–2982. <https://doi.org/10.1111/1365-2664.14288>
- Moyano, J., Zamora-Nasca, L. B., Caplat, P., García-Díaz, P., Langdon, B., Lambin, X., Montti, L., Pauchard, A., & Nuñez, M. A. (2023). Predicting the impact of invasive trees from different measures of abundance. *Journal of Environmental Management*, 325, 116480. <https://doi.org/10.1016/j.jenvman.2022.116480>
- Mykleby, P. M., Snyder, P. K., & Twine, T. E. (2017). Quantifying the trade-off between carbon sequestration and albedo in midlatitude and high-latitude North American forests. *Geophysical Research Letters*, 44(5), 2493–2501. <https://doi.org/10.1002/2016GL071459>
- Negasa, B., Eba, B., Tuffa, S., Bayissa, B., Doyo, J., & Husen, N. (2014). Control of bush encroachment in Borana zone of Southern Ethiopia: Effects of different control techniques on rangeland vegetation and tick populations. *Pastoralism*, 4(1), 1–7.
- Nerlekar, A. N., & Veldman, J. W. (2020). High plant diversity and slow assembly of old-growth grasslands. *Proceedings of the National Academy of Sciences of the United States of America*, 117(31), 18550–18556. <https://doi.org/10.1073/pnas.1922266117>
- Noden, B. H., Cote, N. M., Reiskind, M. H., & Talley, J. L. (2021). Invasive plants as foci of mosquito-borne pathogens: Red cedar in the southern Great Plains of the USA. *EcoHealth*, 18, 1–12.
- Noden, B. H., & Dubie, T. (2017). Involvement of invasive eastern red cedar (*Juniperus virginiana*) in the expansion of *Amblyomma americanum* in Oklahoma. *Journal of Vector Ecology*, 42(1), 178–183.
- Noden, B. H., Tanner, E. P., Polo, J. A., & Fuhlendorf, S. D. (2021). Invasive woody plants as foci of tick-borne pathogens: Eastern redcedar in the southern Great Plains. *Journal of Vector Ecology*, 46(1), 12–18. <https://doi.org/10.52707/1081-1710-46.1.12>
- Nuñez, M. A., Chiuffo, M. C., Torres, A., Paul, T., Dimarco, R. D., Raal, P., Policelli, N., Moyano, J., García, R. A., van Wilgen, B. W., Pauchard, A., & Richardson, D. M. (2017). Ecology and management of invasive Pinaceae around the world: Progress and challenges. *Biological Invasions*, 19(11), 3099–3120. <https://doi.org/10.1007/s10530-017-1483-4>
- Nuñez, M. A., Davis, K. T., Dimarco, R. D., Peltzer, D. A., Paritsis, J., Maxwell, B. D., & Pauchard, A. (2021). Should tree invasions be used in treeless ecosystems to mitigate climate change? *Frontiers in Ecology and the Environment*, 19(6), 334–341. <https://doi.org/10.1002/fee.2346>
- Nuñez, M. A., Hayward, J., Horton, T. R., Amico, G. C., Dimarco, R. D., Barrios-García, M. N., & Simberloff, D. (2013). Exotic mammals disperse exotic fungi that promote invasion by exotic trees. *PLoS ONE*, 8(6), e66832. <https://doi.org/10.1371/journal.pone.0066832>
- Nuñez, M. A., & Paritsis, J. (2018). How are monospecific stands of invasive trees formed? Spatio-temporal evidence from Douglas fir invasions. *AoB Plants*, 10(4), ply041. <https://doi.org/10.1093/aob-pla/ply041>
- Ostfeld, R. S., Levi, T., Keesing, F., Oggenfuss, K., & Canham, C. D. (2018). Tick-borne disease risk in a forest food web. *Ecology*, 99(7), 1562–1573. <https://doi.org/10.1002/ecy.2386>
- Paritsis, J., Landesmann, J. B., Kitzberger, T., Tiribelli, F., Sasal, Y., Quintero, C., Dimarco, R. D., Barrios-García, M. N., Iglesias, A. L., Diez, J. P., Sarasola, M., & Nuñez, M. A. (2018). Pine plantations and invasion alter fuel structure and potential fire behavior in a Patagonian forest-steppe ecotone. *Forests*, 9(3), Article 3. <https://doi.org/10.3390/f9030117>
- Parr, C. L., te Beest, M., & Stevens, N. (2024). Conflation of reforestation with restoration is widespread. *Science*, 383(6684), 698–701. <https://doi.org/10.1126/science.adj0899>
- Peña, E., Hidalgo, M., Langdon, B., & Pauchard, A. (2008). Patterns of spread of *Pinus contorta* Dougl. Ex Loud. Invasion in a natural reserve in southern South America. *Forest Ecology and Management*, 256(5), 1049–1054. <https://doi.org/10.1016/j.foreco.2008.06.020>
- Peng, L., Searchinger, T. D., Zions, J., & Waite, R. (2023). The carbon costs of global wood harvests. *Nature*, 620(7972), 110–115. <https://doi.org/10.1038/s41586-023-06187-1>
- Pérez-Gómez, Á., Godoy, O., & Ojeda, F. (2024). Beware of trees: Pine afforestation of a naturally treeless habitat reduces flower and pollinator diversity. *Global Ecology and Conservation*, 50, e02808. <https://doi.org/10.1016/j.gecco.2024.e02808>
- Prangel, E., Kasari-Toussaint, L., Neuenkamp, L., Noreika, N., Karise, R., Marja, R., Ingerpuu, N., Kupper, T., Keerberg, L., Oja, E., Meriste, M., Tiitsaar, A., Ivask, M., & Helm, A. (2023). Afforestation and abandonment of semi-natural grasslands lead to biodiversity loss and a decline in ecosystem services and functions. *Journal of Applied Ecology*, 60(5), 825–836. <https://doi.org/10.1111/1365-2664.14375>
- Pyšek, P., Jarošík, V., Hulme, P. E., Pergl, J., Hejda, M., Schaffner, U., & Vilà, M. (2012). A global assessment of invasive plant impacts on resident species, communities and ecosystems: The interaction of impact measures, invading species' traits and environment. *Global Change Biology*, 18(5), 1725–1737. <https://doi.org/10.1111/j.1365-2486.2011.02636.x>
- Rejmánek, M., & Richardson, D. M. (1996). What attributes make some plant species more invasive? *Ecology*, 77(6), 1655–1661. <https://doi.org/10.2307/2265768>
- Rejmánek, M., & Richardson, D. M. (2013). Trees and shrubs as invasive alien species—2013 update of the global database. *Diversity and Distributions*, 19(8), 1093–1094. <https://doi.org/10.1111/ddi.12075>
- Ricciardi, L., D'Odorico, P., Galli, N., Chiarelli, D. D., & Rulli, M. C. (2022). Hydrological implications of large-scale afforestation in tropical biomes for climate change mitigation. *Philosophical Transactions of the Royal Society B: Biological Sciences*, 377(1857), 20210391. <https://doi.org/10.1098/rstb.2021.0391>
- Richardson, D. M., Williams, P. A., & Hobbs, R. J. (1994). Pine invasions in the southern hemisphere: Determinants of spread and invadability. *Journal of Biogeography*, 21(5), 511–527. <https://doi.org/10.2307/2845655>
- Roe, S., Streck, C., Obersteiner, M., Frank, S., Griscom, B., Drouet, L., Fricko, O., Gusti, M., Harris, N., Hasegawa, T., Hausfather, Z., Havlík, P., House, J., Nabuurs, G.-J., Popp, A., Sánchez, M. J. S., Sanderman, J., Smith, P., Stehfest, E., & Lawrence, D. (2019). Contribution of the land sector to a 1.5°C world. *Nature Climate Change*, 9(11), 817–828. <https://doi.org/10.1038/s41558-019-0591-9>
- Rohatyn, S., Yakir, D., Rotenberg, E., & Carmel, Y. (2022). Limited climate change mitigation potential through forestation of the vast dryland regions. *Science*, 377(6613), 1436–1439. <https://doi.org/10.1126/science.abm9684>
- Rotenberg, E., & Yakir, D. (2010). Contribution of semi-arid forests to the climate system. *Science*, 327(5964), 451–454. <https://doi.org/10.1126/science.1179998>

- Rothman, S., Jones, J., LaDeau, S., & Leisnham, P. (2021). Higher west Nile virus infection in *Aedes albopictus* (Diptera: Culicidae) and *Culex* (Diptera: Culicidae) mosquitoes from lower income neighborhoods in urban Baltimore, MD. *Journal of Medical Entomology*, 58(3), 1424–1428. <https://doi.org/10.1093/jme/tjaa262>
- Rundel, P. W., Dickie, I. A., & Richardson, D. M. (2014). Tree invasions into treeless areas: Mechanisms and ecosystem processes. *Biological Invasions*, 16(3), 663–675. <https://doi.org/10.1007/s10530-013-0614-9>
- Sapsford, S. J., Brandt, A. J., Davis, K. T., Peralta, G., Dickie, I. A., Gibson, R. D., II, Green, J. L., Hulme, P. E., Nuñez, M. A., Orwin, K. H., Pauchard, A., Wardle, D. A., & Peltzer, D. A. (2020). Towards a framework for understanding the context dependence of impacts of non-native tree species. *Functional Ecology*, 34(5), 944–955. <https://doi.org/10.1111/1365-2435.13544>
- Sapsford, S. J., Wakelin, A., Peltzer, D. A., & Dickie, I. A. (2022). Pine invasion drives loss of soil fungal diversity. *Biological Invasions*, 24(2), 401–414. <https://doi.org/10.1007/s10530-021-02649-7>
- Seddon, N., Chausson, A., Berry, P., Girardin, C. A. J., Smith, A., & Turner, B. (2020). Understanding the value and limits of nature-based solutions to climate change and other global challenges. *Philosophical Transactions of the Royal Society B: Biological Sciences*, 375(1794), 20190120. <https://doi.org/10.1098/rstb.2019.0120>
- Shackleton, R. T., Le Maitre, D. C., Pasiecznik, N. M., & Richardson, D. M. (2014). Prosopis: A global assessment of the biogeography, benefits, impacts and management of one of the world's worst woody invasive plant taxa. *AoB Plants*, 6, plu027. <https://doi.org/10.1093/aobpla/plu027>
- Shephard, N., & Maggard, A. (2023). Guidelines for effective climate smart forestry. *Environmental Research Letters*, 18(6), 061004.
- Simberloff, D., Nuñez, M. A., Ledgard, N. J., Pauchard, A., Richardson, D. M., Sarasola, M., Van Wilgen, B. W., Zalba, S. M., Zenni, R. D., Bustamante, R., Peña, E., & Ziller, S. R. (2010). Spread and impact of introduced conifers in South America: Lessons from other southern hemisphere regions. *Austral Ecology*, 35(5), 489–504. <https://doi.org/10.1111/j.1442-9993.2009.02058.x>
- Smith, P., Davis, S. J., Creutzig, F., Fuss, S., Minx, J., Gabrielle, B., Kato, E., Jackson, R. B., Cowie, A., Kriegler, E., van Vuuren, D. P., Rogelj, J., Ciais, P., Milne, J., Canadell, J. G., McCollum, D., Peters, G., Andrew, R., Krey, V., ... Yongsung, C. (2016). Biophysical and economic limits to negative CO₂ emissions. *Nature Climate Change*, 6(1), 42–50. <https://doi.org/10.1038/nclimate2870>
- Souza-Alonso, P., Rodríguez, J., González, L., & Lorenzo, P. (2017). Here to stay. Recent advances and perspectives about acacia invasion in Mediterranean areas. *Annals of Forest Science*, 74(3), Article 3. <https://doi.org/10.1007/s13595-017-0651-0>
- Stevens, N., & Bond, W. J. (2024). A trillion trees: Carbon capture or fuelling fires? *Trends in Ecology & Evolution*, 39(1), 1–4. <https://doi.org/10.1016/j.tree.2023.09.015>
- Tang, X., Zhao, X., Bai, Y., Tang, Z., Wang, W., Zhao, Y., Wan, H., Xie, Z., Shi, X., Wu, B., Wang, G., Yan, J., Ma, K., Du, S., Li, S., Han, S., Ma, Y., Hu, H., He, N., ... Zhou, G. (2018). Carbon pools in China's terrestrial ecosystems: New estimates based on an intensive field survey. *Proceedings of the National Academy of Sciences of the United States of America*, 115(16), 4021–4026. <https://doi.org/10.1073/pnas.1700291115>
- Taylor, K. T., Maxwell, B. D., McWethy, D. B., Pauchard, A., Nuñez, M. A., & Whitlock, C. (2017). Pinus contorta invasions increase wildfire fuel loads and may create a positive feedback with fire. *Ecology*, 98(3), 678–687. <https://doi.org/10.1002/ecy.1673>
- Taylor, K. T., Maxwell, B. D., Pauchard, A., Nuñez, M. A., & Rew, L. J. (2016). Native versus non-native invasions: Similarities and differences in the biodiversity impacts of Pinus contorta in introduced and native ranges. *Diversity and Distributions*, 22(5), 578–588. <https://doi.org/10.1111/ddi.12419>
- Tidball, K. G. (2014). Seeing the forest for the trees: Hybridity and social-ecological symbols, rituals and resilience in post disaster contexts. *Ecology and Society*, 19(4), 25.
- United Nations. (2013). *Large-scale consolidated methodology: Afforestation and reforestation of lands except wetlands 2.0*. Framework Convention on Climate Change, Clean Development Mechanism.
- Veldman, J. W., Aleman, J. C., Alvarado, S. T., Anderson, T. M., Archibald, S., Bond, W. J., Boutton, T. W., Buchmann, N., Buisson, E., Canadell, J. G., de Dechoum, M. S., Diaz-Toribio, M. H., Durigan, G., Ewel, J. J., Fernandes, G. W., Fidelis, A., Fleischman, F., Good, S. P., Griffith, D. M., ... Zaloumis, N. P. (2019). Comment on "The global tree restoration potential". *Science*, 366(6463), eaay7976. <https://doi.org/10.1126/science.aay7976>
- Veldman, J. W., Overbeck, G. E., Negreiros, D., Mahy, G., Le Stradic, S., Fernandes, G. W., Durigan, G., Buisson, E., Putz, F. E., & Bond, W. J. (2015). Where tree planting and forest expansion are bad for biodiversity and ecosystem services. *BioScience*, 65(10), 1011–1018. <https://doi.org/10.1093/biosci/biv118>
- Wang, Z., Peng, D., Xu, D., Zhang, X., & Zhang, Y. (2020). Assessing the water footprint of afforestation in Inner Mongolia, China. *Journal of Arid Environments*, 182, 104257. <https://doi.org/10.1016/j.jaridenv.2020.104257>
- White, R. P., Murray, S., Rohweder, M., Prince, S. D., & Thompson, K. M. (2000). Grassland ecosystems. In *Pilot analysis of global ecosystems*. World Resources Institute. <https://www.cabdirect.org/cabdirect/abstract/20013053653>
- Xu, H., Yue, C., Zhang, Y., Liu, D., & Piao, S. (2023). Forestation at the right time with the right species can generate persistent carbon benefits in China. *Proceedings of the National Academy of Sciences of the United States of America*, 120(41), e2304988120. <https://doi.org/10.1073/pnas.2304988120>
- Yang, Y., Tilman, D., Furey, G., & Lehman, C. (2019). Soil carbon sequestration accelerated by restoration of grassland biodiversity. *Nature Communications*, 10(1), Article 1. <https://doi.org/10.1038/s41467-019-08636-w>
- Yokomizo, H., Possingham, H. P., Thomas, M. B., & Buckley, Y. M. (2009). Managing the impact of invasive species: The value of knowing the density–impact curve. *Ecological Applications*, 19(2), 376–386. <https://doi.org/10.1890/08-0442.1>

SUPPORTING INFORMATION

Additional supporting information can be found online in the Supporting Information section at the end of this article.

Table S1: Estimation of annual mitigation potential for 400Mha of afforestation or reforestation, according to different sources.

How to cite this article: Moyano, J., Dimarco, R. D., Paritsis, J., Peterson, T., Peltzer, D. A., Crawford, K. M., McCary, M. A., Davis, K. T., Pauchard, A., & Nuñez, M. A. (2024). Unintended consequences of planting native and non-native trees in treeless ecosystems to mitigate climate change. *Journal of Ecology*, 112, 2480–2491. <https://doi.org/10.1111/1365-2745.14300>